



PIECEFULLY YOURS

BAYBERRY QUILTERS OF CAPE COD

Volume XXIX

Issue 4

May 2011

PIECE FROM THE TOP

Dear Bayberry Members,

As I look back on this year at Bayberry Quilters, I am touched by the generosity of our members who enthusiastically took on any number of new charity projects in addition to continuing to make quilts for wounded soldiers, abused children, neonatal infants, and seriously ill children. Thank you to all who have been making quilts for Japanese families who are suffering terribly after the earthquake/tsunami catastrophes. Thanks to Eileen Ryan and to Hillary Ward who volunteered to collect and ship them to Colorado and then off to Japan.

After the first huge response in October for the Miles of Smiles pillowcase campaign, many of you are still sewing cheerful pillowcases for children in Boston hospitals dealing with cancer. Charlotte Toia, our pillowcase coordinator, tells us that Bayberry members have donated 100 pillowcases. With just over 260 members this year, we certainly are making an impact by reaching out to local, regional, and world communities.

Another new project which might interest some of you is making cheerful tablecloths to use at our September New Members Tea. We've set aside time at the May and June Quilt-Ins to finish these tablecloths, and Diane McGuire has included directions on Page 2 of this newsletter if you'd like to make one at home. We need about twenty, and are encouraging the use of any orphaned blocks you have stashed away.

If you have never taken a workshop, you are missing one of the fabulous benefits of being a Bayberry member. Take a chance on something you've never tried before - "get out of your box," as Paula Tũaño would say to me, and see what all the excitement is about something you've never tried. She was right. I'm now a traditional quilter who surprises my family and myself with some pretty "wow" contemporary quilts. Who knew? If you have a friend who is not a member and would like to take a Bayberry workshop, she can sign up as well. Her name goes on a waiting list until 30 days before the workshop, when she gets in if space is available.

Christine wants to remind everyone that the Tuesday evening meeting usually has a different lecture than the Wednesday morning meeting. Not only that, but the intimate setting with 30 or so members instead of 150 members allows you to see and touch details not possible in the larger group. Many members have started going to both meetings. Come see what you are missing.

Happy Quilting,

Carol Salerno, President

Christine White, Vice President



PROGRAM NOTES



MAY 2011

Diane Hire: Diane is a fiber artist, quilt maker, designer and colorist. Her hard and fast rule is: "Find out the rules and determine a way to break them". www.dhquiltsandclasses.blogspot.com/

Lecture: May 24 - Discovery of Quilting

Lecture: May 25 - Oxymorons - Absurdly Logical Quilts

WORKSHOP: May 26 - Come Play with Me - Intuitive and improvisational games that allow creative juices to flow.

WORKSHOP: May 27 - Curvaceous Squares - Curves without templates.

SEPTEMBER 2011

Have you ever wanted to make a memory quilt? Or, perhaps you want to try your hand at becoming an art quilter and making 3-D holographic images? You are in for a treat. Wen Redmond is coming to Bayberry in September. Wen is a fiber artist whose work has been showcased in *Quilting Arts* magazine and on the Quilting Arts TV show among many other places. Wen's work is innovative and fascinating. She works with photography, digital, transparency, collage and layers. Wow!

TRUNK SHOW: September 27 and September 28.

WORKSHOP: September 28 - Easy Image Transfer

An image, such as a photograph, old drawings or even junk mail may be transferred to material. Wen will demonstrate and teach how easy it is to transfer onto fabric. We will be able to create lovely aged and distressed images.

WORKSHOP: September 29 - Holographic Memories

Digital photographs will be used to capture your favorite people or favorite subjects in 3-D. You will create the effect of a holographic picture. You will be amazed at the beauty you create and impressed with your creative abilities.

OCTOBER 2011

Carol Shinn: How lucky we are to have Carol Schinn coming to our guild. Carol "paints" with machine embroidery and we can learn to paint too. Carol works with all levels of students so beginner or advanced come and join the fun. Using a basic machine we will explore surface design and embellishments. Emphasis will be on creating a surface saturated with layers of thread. Carol will explain her process of using heat-transfer images and individual styles of "mark making." Ideas for designing, techniques for troubleshooting and options for finishing will be discussed.

www.carolshinn.com

Lecture: October 25 - 2D Elements of Design

Lecture: October 26 - Carol Shinn's Work

Two-Day Workshop: October 27 and 28: Painting with Machine Embroidery - Exploring surface embellishments with the emphasis being on creating a surface saturated with layers of thread.

Karen Gilligan, Ruth Wilcox
Program Co-Chairs



Share our Skills

Share Our Skills is Bayberry's Quilt-In theme. Have you learned a new technique you would be willing to demonstrate? Do you have a new favorite pattern or book you would like to recommend? Let me know so we can share them with our members. We will work on the following projects over the coming months as well as items for Bayberry's Boutique:

May 14 - Painting on Fabric with Sheila McAvoy

- Supply List on Page 4

- Work on Boutique Items

June 11 - Work on Boutique Items

September 10 - 09:30am - TBA

01:00pm - New Members Tea

We are planning to make tablecloths to cover the bridge tables at the New Members' Tea in September. We thought that making them from orphan blocks or half finished larger quilts would be interesting and fun. They would add a colorful touch to the tea plus serve as interesting conversation starters. Here are the directions:

Finished size about 44" x 44" (the width of fabric.) Make a center medallion of one, four, eight (whatever makes a square even if you have to put borders around different size blocks). Add borders to make the top the above size. Cut or piece backing. Plain muslin is fine, or any fabric that you want to use up. With right sides together sew around leaving an opening large enough to turn. Turn right sides out and stitch opening closed. Sew through both layers enough to hold them together if we need to wash them. No batting required. Just a few lines of stitching around the center medallion, etc. is enough.

We plan to use lightweight plastic over the tablecloths so that we can avoid washing them every year if possible. They may be any color but cheerful florals are encouraged. Some fabrics and odd blocks have been donated and will be available at meetings and the Quilt-Ins.

Diane McGuire
Share Our Skills

All Workshops and Quilt-Ins are held at the West Dennis Graded Schoolhouse in West Dennis, unless you are notified otherwise. Workshops and Quilt-Ins start at 9:30 am



*Bayberry Quilters of Cape Cod
30th Anniversary Quilt Show
August 4-6, 2011*

It's May 1st; all quilt registrations and photographs should now be with Ellie Held, our Registration Chair.

Maureen Cunningham has been successful in filling all vendor slots; some of our old favorites are returning and we hope the new vendors will become "our old favorites."

Look for new signs pointing the public to the quilt show. They will be posted on Rtes. 6, 6A and 137. They're much lighter in weight, but sturdy, and will be easier to handle. We'll still use the old wooden sign at the entrance to the Tech School - that's a keeper!

The Antique/Vintage quilt selections have been made. Be on the lookout for a most unusual entry.

If you haven't seen the completed 2011 Raffle Quilt, "Our Cape Cod," be sure to attend the May day meeting. We are looking for volunteers to take the Raffle Quilt to various craft shows and fairs over the spring and summer and sell tickets. Please contact Leslie Bird and/or Carol Salerno for further details.

Don't forget your contribution for the Bayberry Boutique. You'd be surprised at the number of visitors who make a bee-line to the Boutique before viewing the show and/or shopping with our vendors.

The Quilt Show is a success because of the volunteers who give time to work at the show. Sign up sheets have been available at the monthly meetings, but there are still many slots that need to be filled. Please contact Katharine Major, Claude Danner or the Chairperson of the Committee you wish to assist if you haven't done so already. Volunteers should check in at the Volunteer Check-In Table next to the Admissions Table located at the handicapped entrance to the school. You will receive a volunteer badge to wear with your Bayberry name tag. Join a committee, make new friends and support your guild's efforts all at the same time

Once again, Vivien Sayre will be on hand to appraise the treasured quilts that are brought to the show. Please call Marge Lydecker to arrange an appointment for an appraisal. We suggest you contact Marge prior to the show to arrange an appointment for a time slot.

A number of Challenge Quilts have been displayed at past guild meetings. The interpretation and imagination displayed by our members is diverse, whimsical and artsy. Kits are still available if you want to be part of this year's challenge. And remember, these quilts will be hung at the Cape Cod National Seashore to help them celebrate their 50th Anniversary.

We look forward to seeing your quilts at the show and also your smiling faces as you meet and greet the public in your positions as volunteers for the various jobs that need doing now and during the show.

If you have any questions or ideas you'd like to share, please contact either Claude or myself.

*Katharine Major
Claude Danner
Quilt Show Co-Chairs*

Artistic Treasures Raffle



This year we are trying something new and exciting for our quilt show. We are asking for donations of your work for an "Artistic Treasures Raffle." We know you can quilt, but with your artistic flair, many of you pursue other mediums. We are looking for donations of paintings, needlework (embroidery, needlepoint, cross stitch, etc.), beading, knitting. Are you or your husband a woodworker? Is there something in the workshop crying out to be shown and raffled off? You can bring your items to monthly meetings or Quilt-Ins. With this raffle, we have a unique opportunity to show our talents to Cape Cod, the viewing public and contribute to charity at the same time.

*Charlotte Toia, Raffle Chair
Mickie Heath
Paula Tũaño*



Bayberry Boutique

The Boutique has received many lovely items for the quilt show. We have quilts, wall hangings, placemats, aprons, doll clothes and jewelry; stuffed toys, baby shoes and baby bibs. We know how talented our members are and we look forward to receiving more items in the coming months. Remember, you can bring your donations to our monthly meetings and also to the monthly Quilt-Ins which are held at the West Dennis Graded Schoohouse.

**Saturday, May 14
Saturday, June 11**

We request that all items made for the Boutique be handed in no later than the June Quilt-In. Each item has to be categorized and priced before it is set out at the Quilt Show. Trying to categorize and price items when the show is in progress adds a hiccup to an otherwise orderly process. If you must hand in your item after the June Quilt-In date, we ask that you do so on the day you register your quilts for the show. This will at least give us some time to accommodate you before the show.

*Barbara O'Neill
Janet Bantly
Boutique Co-Chairs*

This newsletter is published four times a year for members of the Bayberry Quilters Guild of Cape Cod

Editors
Joan Andrews
Marilyn Swenson

Mailing Committee
Sandwich Stitches
Sandwich

bayberryquiltersofcapecod.com



**PLEASE
TURN CELL
PHONES OFF DURING
LECTURES AND/OR
WORKSHOPS**



Spotlight on Bayberry Members

Diane McGuire, had an exhibit at the Attleboro Public Library in April entitled “**The Art of Quiltmaking.**” Special events included a lecture and demonstration, along with a trunk show of her quilts.

The Lowell Quilt Museum is displaying three quilts donated by Bayberry members from April 14 through July 10, 2011. Fran Brands’ “**Bountiful Blessings**” and “**Vitamin C Plus**”, and Eleanor Meaney’s “**A Feathered Star for Herself.**” These quilts are now part of the museum’s permanent collection and will be hung side by side for this exhibit. Try to get to the museum to see them during this time period because the exhibits change periodically.

Priscilla Smith won the *Juror’s Choice Award* for her quilt “**The Weapons of War**” at the Northeast Regional Contemporary Fiber Exhibition held in Rochester, NY. Visit their website www.rochestercontemporary.org for details and photos.

Just a reminder, many of you know that Marge Lydecker was invited by Richard Cleveland, the founder of the Vermont Quilt Festival, to curate a special exhibit entitled: “**Life’s Work: The Quilts of Marjorie Haight Lydecker and Her Students**”. Around 50 quilts will be on display at the Vermont Quilt Festival, June 24-26. If you plan to be at the festival, be sure to check when Marge will be giving a lecture on these quilts. Her knowledge and interpretation will make your visit that much more enjoyable.

*Joan Andrews
Newsletter Editor*

REMINDER

Please refer to your Membership Book for member’s addresses, phone numbers and email addresses. This information will no longer be published in the quarterly newsletter.



SUPPLY LIST - PAINTING ON FABRIC May 14, 2011 QUILT-IN

Since **Quilt-Ins** are for sharing skills, anyone with experience in painting on fabric is welcome to bring supplies they might have and share them with those members who want to learn a new technique. This would include paints, brushes, stamps, books, samples of techniques.... or anything of interest relating to painting on fabric.

Those who want to participate in doing some painting on fabric should bring:

- ~ Pieces of white, prewashed natural fiber fabric (100% cotton, silk, bamboo).
- ~ Any size brushes... the bigger the better
- ~ An apron, wear clothes that you don’t mind getting paint on in case of any oops.
- ~ A plastic dinner size plate.
- ~ Scissors
- ~ Paper towel &/or sponge
- ~ Containers for water (tuna fish cans are great)

Sheila McAvoy

Quilt Registration for Bayberry’s 30th Annual Quilt Show



Now that quilt registrations are in, we will all be busy finishing our quilts. As the show nears, please remember that **all quilts need a four- inch sleeve for hanging, including Challenge quilts.** Specifications appear on Page 5. If you have not sent in a picture of your quilts, *please send it to Ellie Held with your name and the quilt’s name on the back of the photo.*

Before bringing your quilt(s) to the show, please **put a large safety pin on a bottom corner of your quilt.** This pin will be used to pin a label onto your quilt and will expedite the check-in process.

VOLUNTEERS – I will be looking for **8** volunteers on Wednesday morning, August 3rd, for check-in and **24** on Saturday afternoon August 6th for pick-up. We hope to repeat last year’s performance which took 15 minutes, **but, it is important to have 24 volunteers** to make this work quickly and efficiently. Instead of hanging around waiting for your quilt, please help us out and we can all go home faster. A volunteer reminder will be sent to you in late July. Sign-up sheets will be at the May meetings or you can contact me.

QUILT CHECK-IN

Wednesday: August 3rd – 8:30 AM

IMPORTANT: All **LARGE** quilts need to be at the registration tables no later than **10:00AM.** Large quilts are 300” or more in overall size. Smaller quilts will be accepted up and until 11:00AM.

Please bring your quilts to the Registration Tables outside the gym door of the Cape Cod Regional Technical High School to check them in.

QUILT PICK-UP

Saturday, August 7th - ABOUT 3:30 PM

Pick up will begin after all quilts have been taken down.

Please save all this information, as this is the last newsletter before the show. Here’s to a great show!

*Ellie Held
Registration Chair*

*“I endeavor to make the most of everything.”
Victoria Woodhull (1838-1927)
Suffragist; first woman to run for US President .*

SLEEVE INSTRUCTIONS

Cut a 10" wide piece of fabric 2" less than the width of the quilt. Fold and sew 1/2" hem on each 10" end of the piece. Piece should now be 3" less than the WIDTH of the quilt (Fig. 1). Fold sleeve in half with wrong sides together and sew raw edges together with a 1/2" seam. On the FOLDED edge, sew a 1/2" seam with a BASTING stitch (Figs. 2 and 3). Press raw edge seam open, position seam so that it is in the middle of the back of the sleeve and the basting stitch hem is in the middle of the front of the piece. Attach the top and bottom of the sleeve to the back of the quilt. Sew the INSIDE ends of the sleeve to the back of the quilt. Remove the BASTING thread from the front of the sleeve. To make a sleeve for a small quilt, cut the original piece 6" instead of 10" and follow the same directions.

Fig. 1 Raw Edges

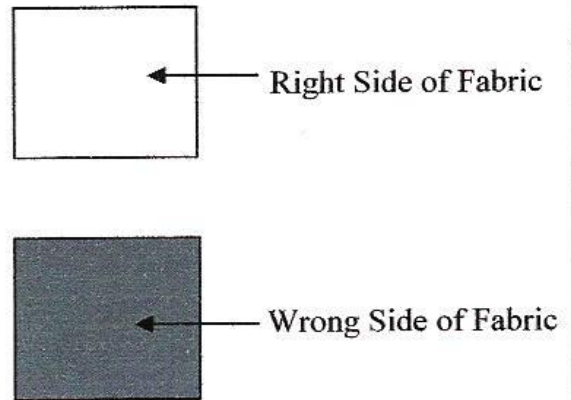
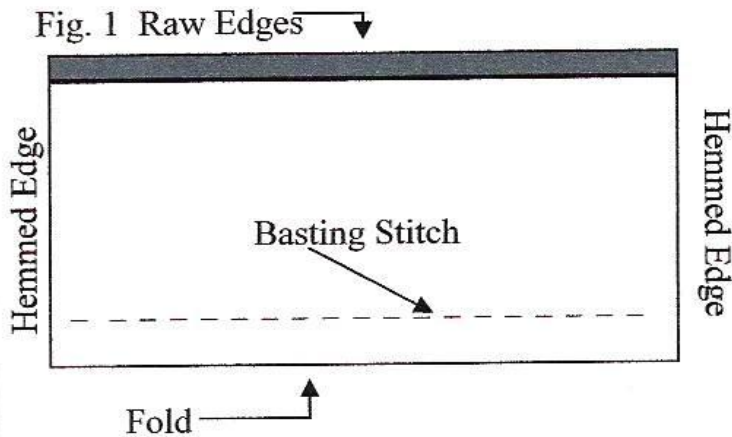


Fig. 2

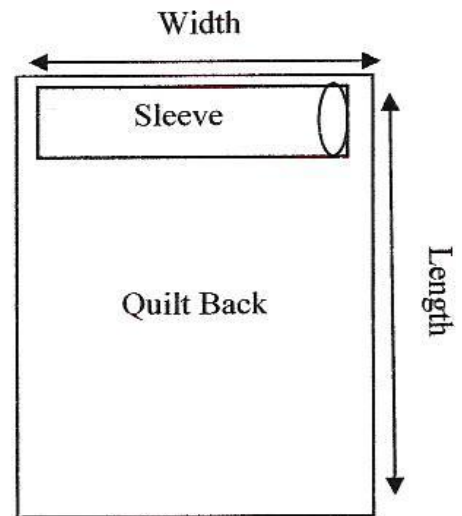
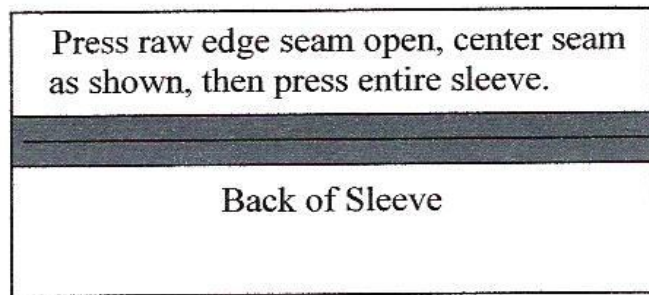
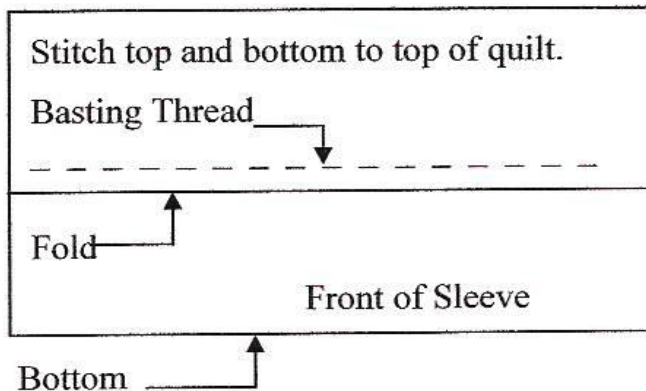


Fig. 3 Top



Sew under sides of sleeve ends to back of quilt. Pull basting thread out to release front tuck.



*Bayberry Quilters of Cape Cod
30th Anniversary Quilt Show
Raffle Prizes*

Raffle tickets have been printed and some given out at the guild meetings. Please remember to pick up your tickets at future meetings and quilt-ins. This year's raffle prizes are as follows:

- 1st Prize:** "Our Cape Cod" - A wall Hanging of Cape Cod's Towns, Villages and Special Characteristics.
Designed and Created by Bayberry Members Professionally Machine Quilted by Diane H. McGuire
- 2nd Prize:** Janome 3160 Sewing Machine
Donated by Murrays Fabrics, Orleans, MA
- 3rd Prize:** Two Aluminum Folding Director's Chairs with Trays and Cup Holders
Donated by Major's RV, Bourne, MA

Please remember, membership responsibilities include selling raffle tickets to help support scholarships for students at Cape Cod Tech so that they can pursue higher education.

*Leslie Bird
Carol Salerno
Raffle Committee*

Message from the Quilt Show Curators

Hello Quilters,

The Curators of the quilt show, that is the committee that does the hanging, can't wait to see your wonderful quilts. We will be working hard the 3rd of August to position all the quilts in just the right places. We need your help to get the job done right. We need **large quilts**, those over 300" in perimeter, **by 10 AM** on the 3rd, and **all the others by 11**. We also need a picture of each quilt. Be sure to put your name and the quilt name on the back of the picture. Ellie has given directions for making a sleeve for your quilt in this newsletter, and all quilts, even the very small ones for the National Seashore, need sleeves. I hope you're working hard to get them all finished in time.

Very important - If you registered a quilt for the show but were unable to complete it, please inform the Curators. The Scavenger Hunt at the quilt show lists items on the quilts. If your quilt was singled out because of something special in it, we need to let the public know the quilt was withdrawn. Last year we had a lot of unhappy "Scavengers" looking for something things that weren't there. As always, your cooperation is appreciated.

Happy quilting!

*Sydney Glover
Sue Hart
Marge Farquharson*

"After the verb 'to love', 'to help' is the most beautiful verb in the world."

*Bertha von Suttner (1843-1914)
The first woman to receive the Nobel Peace Prize.*

Quilting Events

New England Quilt Museum

April 4-July 10, 2011

One Foot Square, Quilted & Bound

Special Showing: Fran Brand's "Vitamin C Plus", "Bountiful Blessings" and Eleanor Meaney's "A Feathered Star for Herself"

Lowell Quilt Festival- Images 2011

August 11-13, 2011

Adm: Single \$12; Group of five or more prepay before 7/31: \$10; Bus Group 30 or more: \$10 plus one free admission. Admission fee includes entrance to both Images and NEQM. Free shuttle service to venues in Lowell.

18 Shattuck Street, Lowell, MA

www.nequiltmuseum.org

Quilters Connection-34th Annual Quilt Show & Sale

June 3-4: 10am-6pm; June 5: 10am-3pm

Arsenal Center for the Arts - Adm.: \$6.00

321 Arsenal Street, Watertown, MA 02472

www.quiltersconnection.org

Thames River Quilters-Quilts Along the Thames

June 3: 12Noon-8pm; June 4: 10am-4pm

Ledyard Congregation Church - Adm: \$8.00

722 Colonel Ledyard Highway, Ledyard, CT

Material Girls Quilt Guild-"A Quilter's Path" Quilt Show

June 24: 10am-5pm; June 25: 9am-3pm

St. Leo's School Auditorium

120 Main St., Leominster, MA

www.materialgirlsquiltguild.org

Vermont Quilt Festival

June 24-25, 2011

Champlain Valley Expo. Ctr., Essex Jct., VT

Friday-Saturday: 9am-6pm; Sunday: 9-3pm

Adm.: \$12; Seniors/Groups 25+: \$10

www.vqf.org

Pine Tree Quilters Guild-Maine Quilts

July 29-31, 2011

Augusta Civic Center

76 Community Drive, Augusta, ME 04330

Adm: Daily: \$8; Multi-Day: \$12; Group 14 or more with advanced registration: \$7

www.mainequilts.org

Silver City Quilt Guild-3rd Biennial Quilt Show

September 17-18, 2011

The Friedman Middle School

500 Norton Ave., Taunton, MA 02780

www.silvercityquiltguild.org



New York City Quilt Extravaganza

On the morning of Saturday, March 26th, Claude Danner, Sharon Wilson and I set out for New York City in Claude's copper-colored SUV for as much fabulous quilt viewing and fabric shopping as three "quiltaholics" could cram into a little over

24 hours. The impetus for the road trip was the "Infinite Variety" exhibition of 650 red and white quilts at the Park Avenue Armory, part of the American Folk Art Museum's Year of The Quilt celebration. These quilts all belong to New Yorker Joanna Rose who began acquiring them in the 1950s and came up with the idea for the show when her husband asked her what she would like for her eightieth birthday. Claude, Sharon and I decided that we just couldn't pass up this once-in-a-lifetime opportunity to see this six-day-only, much publicized display, so we made it our first stop upon arrival in the city. We were not disappointed. My first glimpse of the brilliantly arranged quilts literally took my breath away! This was not just a showing of beautiful quilts – it was an *art exhibition*. As we walked around the 55,000 sq. ft. hall, we were surrounded by dazzling curves and spirals of quilts suspended in air, some four and five high. It was truly a spectacular sight! Though swarms of appreciative women, men, families and school children took in the dramatic display, the immense venue never felt crowded. A circle of eight chairs, draped with quilts, stood in the center of the hall to represent the quilt-makers. Red and white was everywhere, but each unique quilt drew the viewer in. There really was an infinite variety of designs and styles. My only disappointments: the lecture by Alex Anderson, Paula Nadelstern and Meg Cox was sold out, as were the red and white souvenir tote-bags!

I could have spent the entire afternoon gazing at (and photographing!) the red and white quilts, but our time was limited so we moved on. Our next stop was the Museum's main location on 53rd Street where we viewed about 40 wonderful "Masterworks" from the permanent collection of quilts. Highlights for me were a whole-cloth quilt dated 1796 featuring amazing trapunto and quilting (see photo, p.10), an elaborately stenciled quilt and some striking log cabin and crazy quilts.

We then walked along the south edge of Central Park (it was a cool, but crystal clear day) to the Museum's Lincoln Square Branch to see the "Super Stars" exhibit of about 25 of the Museum's star-themed quilts. Most were traditional patterns, like a magnificent Star of Bethlehem (see photo, p. 9), but colors ranged from subdued blues and neutrals to bright yellows, oranges and greens. I think I took pictures of every quilt there!

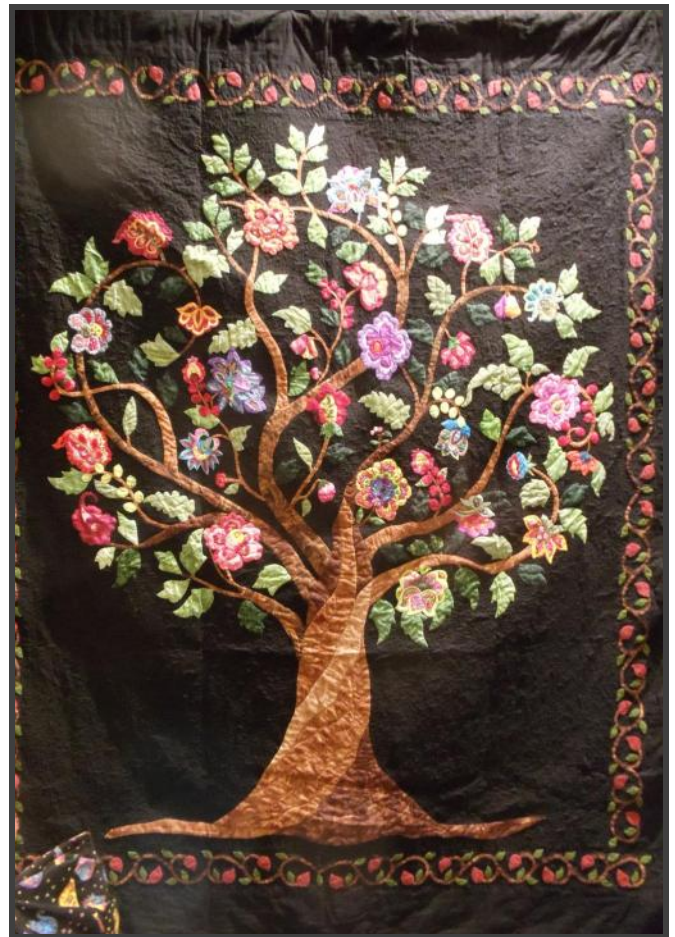
It was getting late, so after an excellent dinner at a Turkish restaurant (we were looking for a cuisine we can't find on The Cape), we took a cab back to our hotel and called it a day. Next morning, following breakfast at a diner across the street and a quick stop at Times Square for photos, we took a cab to the Fashion Institute of Technology on 28th Street for the Empire Quilters Guild "Urban Inspirations" show. This 400-member guild's show featured about 200 quilts and a nice selection of vendors, including some familiar from Bayberry shows. My favorite quilts were a kaleidoscopic collage of New York City buildings embellished with beads and subway tokens, a gorgeous indigo with Sashiko embroidery, a stunning Tree of Life (see photo opposite) and, (no kidding), a quilt humorously depicting rats. Only in New York!

After purchasing some items from the vendors we walked to the local fabric shop, The City Quilter, which boasted an excellent selection of fabric and very friendly staff. We browsed and bought – Claude some Japanese fabric and Sharon and myself some New York-themed fabric.

It was again time to move on, so we got a cab back to the hotel, picked up our bags and got into the car. Claude told us that no visit to NYC was complete without a visit to her favorite food emporium, Zabar's, so that's where we headed next. It was indeed foodie-heaven with a huge selection of classic New York fare as well as international treats. We ate a quick lunch there and each grabbed a few goodies for the trip home and for our hubbies (and kids in Sharon's case). Then we hit the road and arrived back on Cape Cod as the sun was going down. It was a busy day-and-a-half, but great fun and a wonderful experience not soon to be forgotten.

The three of us were so glad we made the trip. Of course, we left some Bayberry show flyers behind in The Big Apple in the hopes of getting some New Yorkers to *our* show this summer!

Nancy McConnell



Tree of Life

2011 Quilt Show - Share Our Skills Exhibit

Bayberry Quilt-Ins are held on the second Saturday of the month (the exceptions being December, July and August.) Each month Diane McGuire designs a new project for members to work on or demonstrates a new quilting technique. Some of the projects from last year include table runners, wall hangings, tablecloths for the New Members' Tea, an unusual design for creating a log cabin block and more.

We'd like to showcase the projects made at the Quilt-Ins. With that in mind, we are requesting members to bring their projects to the show (finished or otherwise) where they will be displayed in a Special Exhibit. The thought behind this idea is to encourage new members and those new to quilting to attend a Saturday Quilt-In where they can learn new techniques and complete a small project in a short space of time. The Quilt-In allows members to meet at a smaller venue and encourages members to reach out to new members in a more relaxed setting.

You won't need a registration form, but you should have your name on the back of your project. For details and further information, contact Claude Danner. Please do not hand these quilts in with your quilt show registrations. They are a separate category and will only confuse the registration process.

*Thank You
Claude Danner*



Quilt Bank Update

Marylou MacFadyen and I went to the Keith Middle School in New Bedford to deliver materials to the Family Consumer Science Department headed by teacher Deb Monast. What a joy! We were invited to the classroom

of 7th graders (delightful kids...mostly boys). One girl got out the year book and showed us a picture of her with the quilt she made last year. We brought lots of fabric, batting, thread and a box of Christmas fabric with patterns and samples for them to make Christmas stockings.

The school was lovely-shiny clean. There are 485 students in the program. Deb has classes all day, every day; they use 12 small Berninas and two sergers. They make locker bags, pillows, trivets, quilts and gifts for their mothers. There is a large bulletin board with samples of everything they make tacked upon it. Many items are donated to charities and Deb was extremely grateful for our gifts. Thanks to Judy Farrar for getting us connected to this school. There will be a collage display at the quilt show of the work done by these students.

The "Bankers" meet every Monday at the Harwich Community Center to make and tie quilts for the Quilt Bank. We'd love to see more members join our group on any Monday they're available. A helping hand here and there is always appreciated. We'd also like to remind members that kits are available to take home if they can't make it to Harwich. These kits can be picked up at any guild meeting or Quilt-In.

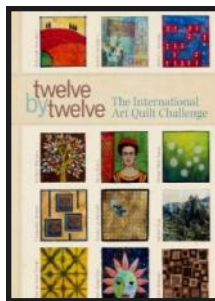
*Grace Filliman
Quilt Bank Chairman*

"The world is our home. It is also the home of many, many other children, some of whom live in faraway lands. They are our world brothers and sisters."

F. B. Carpenter
Around the World with Children

Book Review

Twelve by Twelve: The International Art Quilt Challenge



This is a different sort of book about quilters and quilting. Beautiful pictures of 144 quilts are included – all the quilts are a mere 12x12" – so are brief tutorials about technique and so is biographical information. However, this

is not a how-to or a technique book. I have been following their group blog [and some individual blogs] almost from the beginning: <http://twelveby12.blogspot.com/>

Four years ago a U.S. West Coast quilter contacted eleven other quilters, most of whom she had never met, and asked if they would be interested in being part of a challenge group. The quilters were mostly art quilters; the majority were American, but others were English, Belgian and Australian. They all agreed to make a 12x12" quilt every two months, each set of quilts an individual interpretation of a theme word – the words to be chosen in turn by each member. Words were as varied as chair, mathematics, water, chocolate. The quilters' styles were equally varied, from pictorial to totally abstract, from using traditional patterns as a starting point to dyeing their own fabrics and using new techniques. Each quilter writes a chapter discussing her methods and what belonging to such a group means, how she was inspired to try new things, how twelve strangers, some of whom have never yet met one another, have become fast friends.

The collection of 144 quilts, the results of the first two years, was displayed at a major show in Sydney, Australia, which resulted in this book. The quilts will be at the 2011 International Quilt Show in Houston. The book can be ordered from Amazon or from Barnes & Noble (check out customers' reviews.) They have begun a second two-year round of challenges, this time based on color combinations. The book is full of inspiration and affirms heart-warming friendships that arises among quilters.

June Calendar

Piece by Piece A Review of Rotary Cutting Basics



(from *Quilts and More* magazine's 101 Tips for Successful Quilting)

1. Before rotary cutting, use spray sizing or spray starch to stabilize large fabric pieces.
2. Use purchased bed lifts to raise your cutting table to a comfortable height.
3. Place a white piece of paper under dark fabrics when rotary-cutting on a dark green mat so you can see the fabric edges more clearly.
4. Hold the rotary cutter at a 45° angle to the cutting surface to cut cleanly.
5. Keep even, firm pressure on the rotary cutter while pushing it away from your body. *Never* cut with the blade moving toward you.
6. If you haven't cut through all the fabric layers, check to see if the blade is dull or has a nick.
7. When you cut long fabric strips with a rotary cutter, the ruler can slip as the cutter moves along the edge. Place a weighted object at one end and your hand on the other to hold the ruler steady.
8. You can rotary cut more than one piece of fabric at a time. For best results, only layer up to four pieces. More than four layers may mean less precision.
9. Press to temporarily hold fabrics together before cutting through several layers.
10. Starch a striped fabric before cutting it. This keeps the stripes straight and reduces shifting.

Look for more tips from *Quilts and More* magazine in future newsletters.



Star of Bethlehem



Bayberry Membership

The 2010-2011 Membership year will end on May 31, 2011. If you haven't renewed your membership, please do so now. A membership form is opposite, and also can be found at the back of your membership book or you can get them at Bayberry meetings and/or Quilt-Ins.

Don't forget, one lucky member will receive a free membership for the 2010-2011 membership year if they win the Membership Raffle by renewing their membership before May 31, 2011. The winner's name will be drawn at the June Quilt-In.

Thank You

*Barbara Fitzpatrick
Membership Chairman*

MEMBERSHIP APPLICATION

Bayberry Quilters of Cape Cod
20 ____ to 20 ____

Date: _____

Name: _____

Street Address _____

P.O. Box: _____

Town, State, Zip: _____

Cape Phone Number: _____

E-Mail Address: _____

I will most likely attend: ____ Day ____ Evening Meetings



Many of you know Virginia Laming. For those of you who don't, Virginia was president of Bayberry from 1985-1987.

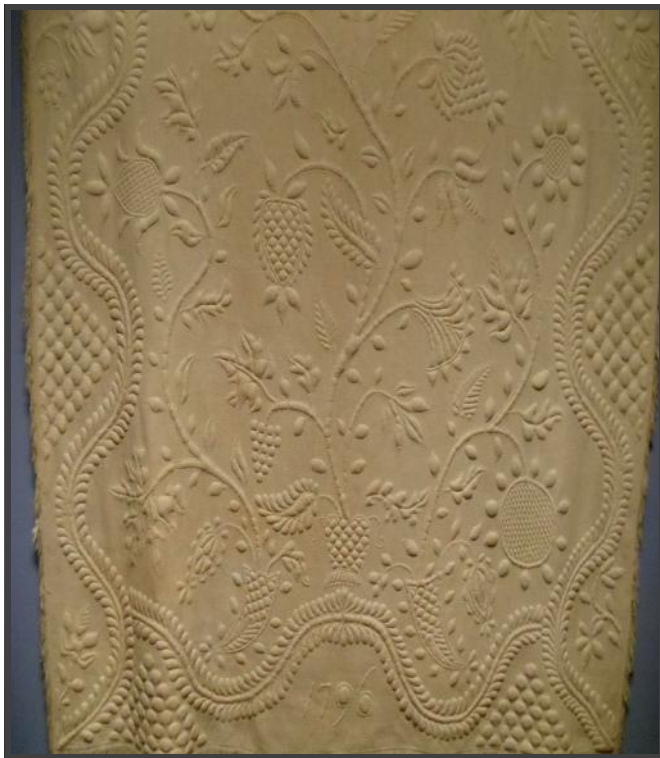
This past winter Virginia was kind enough to give Bayberry several boxes of fabric, some of which had already been cut into pattern pieces. We are using some of this fabric to make tablecloths for our New Members Tea that is held each September. How special that some of the fabric from one of Bayberry's earliest presidents will be in the tablecloths that welcome our newest members. The remaining fabric will be used in our charity projects.

Karen Gilligan



*In Memoriam
Sally Foster*

Sally Foster passed away in January of 2011. She was a member of the "Circle of Friends" and quilting was one of her favorite crafts; genealogy was another of her interests. She was also an active member of the National Society of the Daughters of the American Revolution. She enjoyed walking through the nature preserves on Cape Cod with her husband and could be found watching the osprey nest in Sesuit Harbor every spring.



*1796 Whole Cloth Quilt
with Trapunto*



On the Road Again

It's not too early to start thinking about a road trip for the fall. The East Coast Quilters alliance will once again present A Quilters Gathering in November at the Radisson Hotel in Nashua, NH.

Details and coupons will be in the September 2011 newsletter.

Remember, when the minimum number of people sign up by the deadline date for a Bayberry trip, they will receive the Bayberry discount. Anyone signing up for the trip after the deadline date will not receive the Bayberry discount and will have to pay the full price for the trip.

**Debbie Zeida
Tours**



A small sampling of quilts from the American Folk Art Museum's exhibit:

Infinite Variety: Three Centuries of Red and White Quilts

Diane Hire

Come Play with Me - May 26, 2011

- 1-Day Workshop – \$40.00 Members
\$60.00 Non-Members

Curvaceous Squares - Curves without Templates

May 27, 2011

- 1-Day Workshop – \$40.00 Members
\$60.00 Non-Members

Name _____

Phone _____

Email _____

Make Checks Payable to:

Bayberry Quilters of Cape Cod

Send check to: Karen Gilligan

Please refer to your membership book for
Karen's mailing address.

*Please note on the bottom of your check which
workshop you are paying for.*

Wen Redmond

Easy Image Transfer – September 28, 2010

- 1/2-Day Workshop – \$26.00 Members
\$36.00 Non-Members

\$10.00 Kit Fee—Paid at Workshop

Holographic Images - September 29, 2010

- 1-Day Workshop – \$33.00 Members
\$44.00 Non-Members

\$10.00 Kit Fee—Paid at Workshop

Name _____

Phone _____

Email _____

Make Checks Payable to:

Bayberry Quilters of Cape Cod

Send check to: Karen Gilligan

Please refer to your membership book for
Karen's mailing address.

*Please note on the bottom of your check which
workshop you are paying for.*

Carol Shinn

**Painting with Machine Embroidery
October 27-28, 2011**

- 2-Day Workshop – \$75.00 Members
\$95.00 Non-Members

Name _____

Phone _____

Email _____

Make Checks Payable to:

Bayberry Quilters of Cape Cod

Send check to: Karen Gilligan

Please refer to your membership book for
Karen's mailing address.

*Please note on the bottom of your check which
workshop you are paying for.*

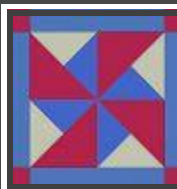
**BAYBERRY BOARD MEETINGS
2011**

**10:00am -- Carleton Hall, Dennis
Wednesday, May 18
Wednesday, September 21**

Refund Policy for Bayberry Workshops

Refunds allowed if members meet this criteria:

1. Notice is given **30 days PRIOR** to the workshop.
2. Extenuating circumstances, subject to review by the president; **OTHERWISE**
3. Only if a replacement can be found.



Your Name

**NAME TAG?
PLEASE WEAR IT TO ALL
BAYBERRY MEETINGS
WE'D LIKE TO KNOW
WHO YOU ARE**



Bayberry Calendar

- May 14 09:30am - Quilt-In - West Dennis Graded Schoolhouse, Dennis
- May 18 10:00am - Board Meeting - Carleton Hall, Dennis
- May 24 07:00pm - Evening Meeting - Diane Hire: Discovery of Quilting
- May 25 09:30am - Day Meeting - Diane Hire: Oxymorons - Absurdly Logical Quilts
- May 26 09:30am - Workshop - Diane Hire: Come Play with Me
- May 27 09:30am - Workshop - Diane Hire: Curvaceous Square - Curves without Templates
- June 11 09:30am - Quilt-In - West Dennis Graded Schoolhouse, Dennis

August 4-6, 2011 --- "Sew Many Pearls" - Bayberry's 30th Annual Quilt Show

AUGUST 12 — NEWSLETTER DEADLINE

- Sep. 10 09:30am - Quilt-In - West Dennis Graded Schoolhouse, Dennis
- 01:00pm - New Members' Tea - West Dennis Graded Schoolhouse
- Sep. 21 10:00am - Board Meeting - Carleton Hall, Dennis
- Sep. 27 07:00pm - Evening Meeting - Wen Redmond: Lecture and Trunk Show
- Sep. 28 09:30am - Day Meeting - Wen Redmond: Lecture and Trunk Show

Evening Meetings: 7:00pm — Cape Cod Reg. Tech. High School -- Harwich
Day Meetings: 9:30am — Church of the Nazarene -- Dennis

| | |
|--|--|
| | <p style="text-align: center;">Bayberry Quilters of Cape Cod PO Box 1253 Orleans, MA 02658</p> |
|--|--|

Nectar from the Gods

